

LEGEND

- NEW LINES
- OLD LINES TO REMAIN
- X NEW VALVES TO INSTALL
- PLUG OR CAP

PARTIAL FLOOR PLAN

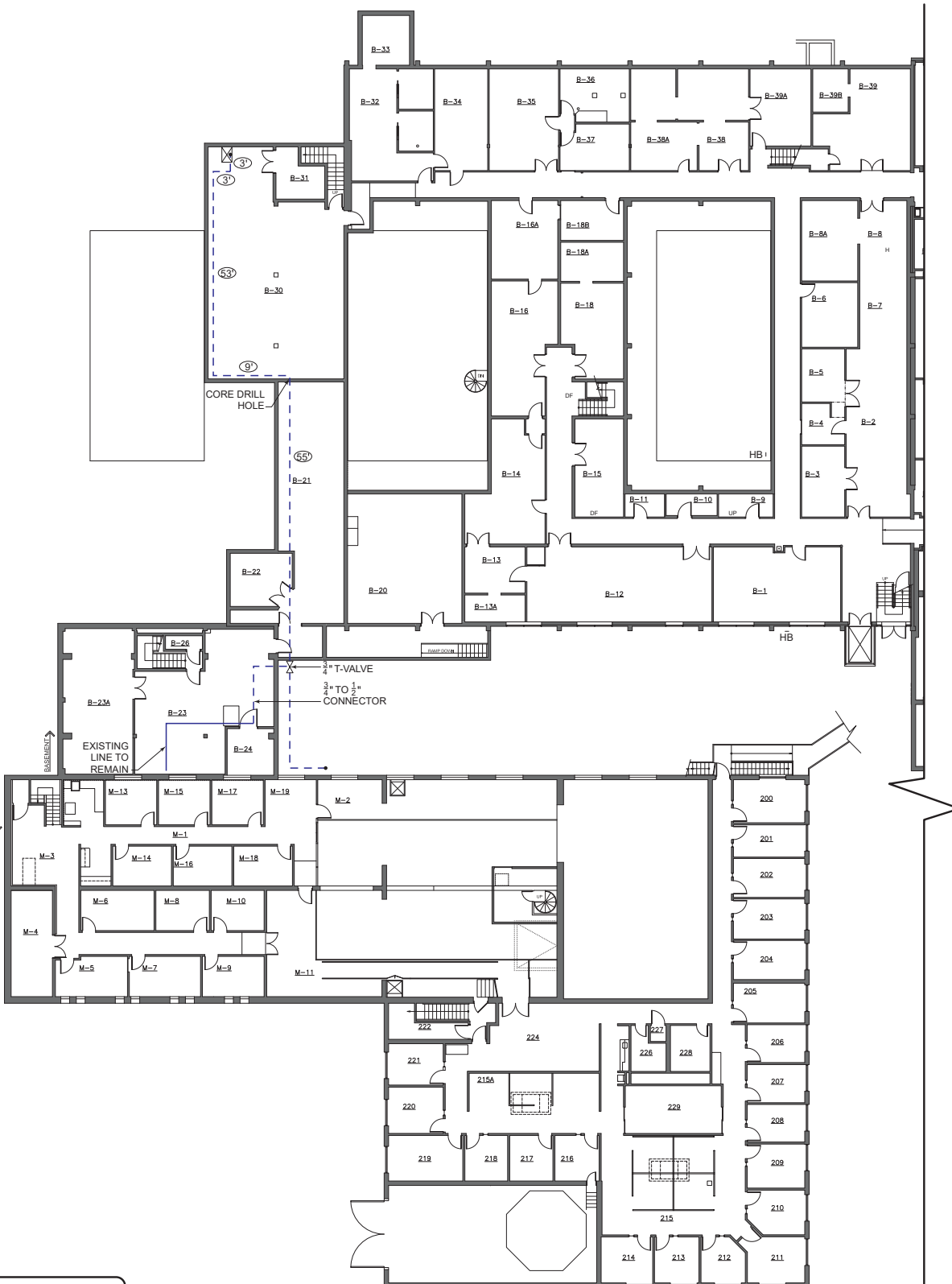
SCALE: 1/8" = 1'-0"



Hawthorne St.

NOTE
ALL NOTED DISTANCES ARE FOR REFERENCE ONLY. CONTRACTOR TO CONDUCT OWN FIELD MEASUREMENTS FOR ACCURACY.

PHASE I



LEGEND

- - - NEW LINES
- OLD LINES TO REMAIN
- ⊗ NEW VALVES TO INSTALL
- ⊔ PLUG OR CAP
- ⊠ EXISTING VALVE

NOTE
 ALL NOTED DISTANCES ARE FOR REFERENCE ONLY. CONTRACTOR TO CONDUCT OWN FIELD MEASUREMENTS FOR ACCURACY.

PARTIAL FLOOR PLAN
 SCALE: 1/8" = 1'-0" NORTH

PHASE 1



National Optical-Infrared Astronomy Research Laboratory
 950 N. Cherry Avenue
 Tucson, AZ 85719
<https://noirlab.edu>

MAIN BUILDING - BASEMENT
 NATIONAL OPTICAL-INFRARED ASTRONOMY RESEARCH LABORATORY
 TUCSON, ARIZONA

DATE 02/15/22
 DWN R.D.D.
 CHK P.W.

LINE NEEDS TO BE REPAIRED FOR LEAK



LEGEND

- - - NEW LINES
- OLD LINES TO REMAIN
- ⊗ NEW VALVES TO INSTALL
- ⊔ PLUG OR CAP
- ⊠ EXISTING VALVE

NOTE
ALL NOTED DISTANCES ARE FOR REFERENCE ONLY. CONTRACTOR TO CONDUCT OWN FIELD MEASUREMENTS FOR ACCURACY.

PARTIAL FLOOR PLAN

SCALE: 1/8" = 1'-0"



Hawthorne St.

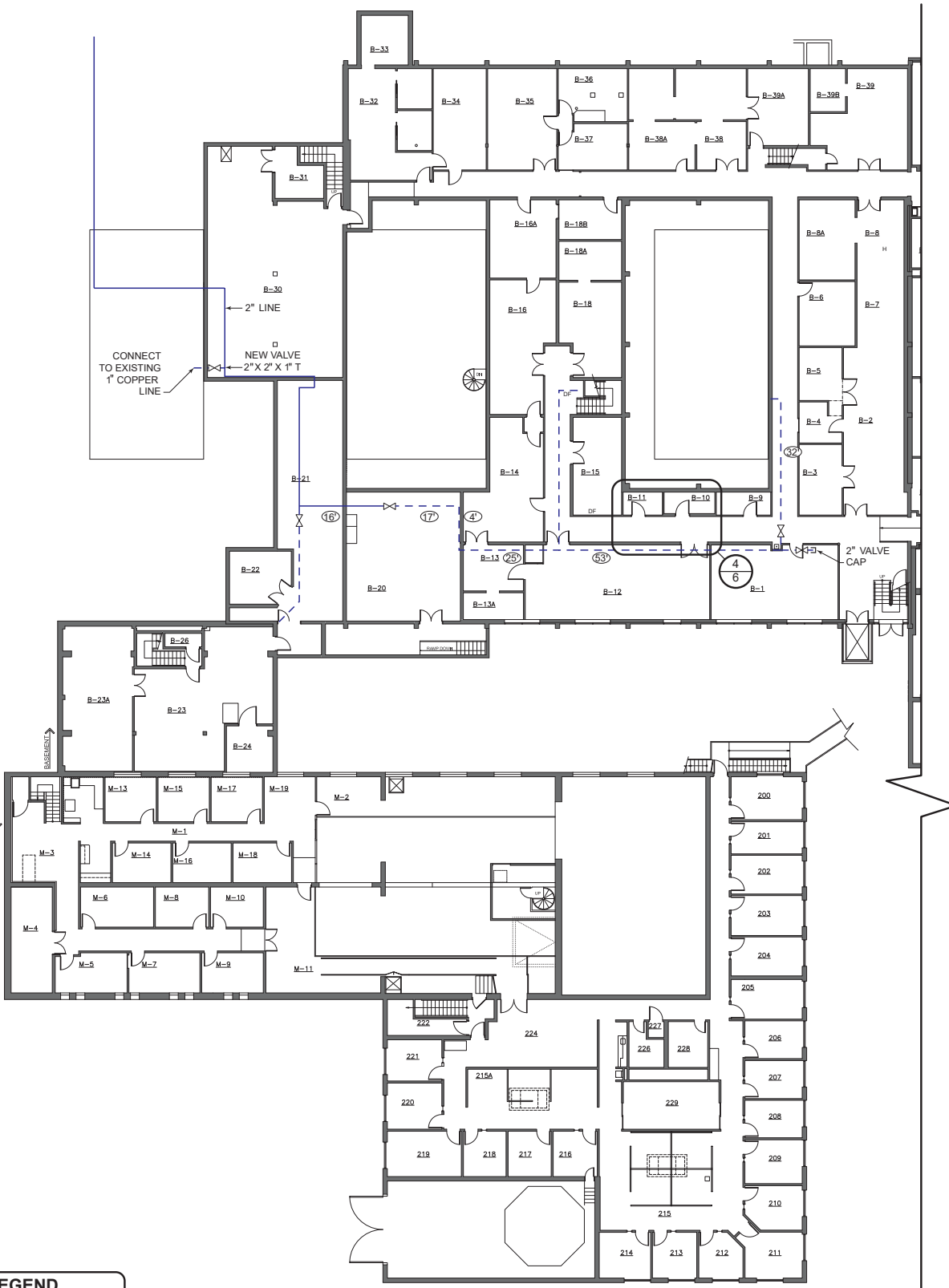
PHASE 2



National Optical-Infrared Astronomy Research Laboratory
950 N. Cherry Avenue
Tucson, AZ 85719
https://noirlab.edu

MAIN BUILDING
NATIONAL OPTICAL-INFRA-RED ASTRONOMY RESEARCH LABORATORY
TUCSON, ARIZONA

DATE 02/15/22
DWN R.D.D.
CHK P.W.



CONNECT TO EXISTING 1" COPPER LINE

NEW VALVE
2" X 2" X 1" T

2" LINE

NOTE
ALL NOTED DISTANCES ARE FOR REFERENCE ONLY. CONTRACTOR TO CONDUCT OWN FIELD MEASUREMENTS FOR ACCURACY.

LEGEND	
---	NEW LINES
—	OLD LINES TO REMAIN
⊗	NEW VALVES TO INSTALL
⊞	PLUG OR CAP
⊠	EXISTING VALVE

PARTIAL FLOOR PLAN

SCALE: 1/8" = 1'-0"

NORTH

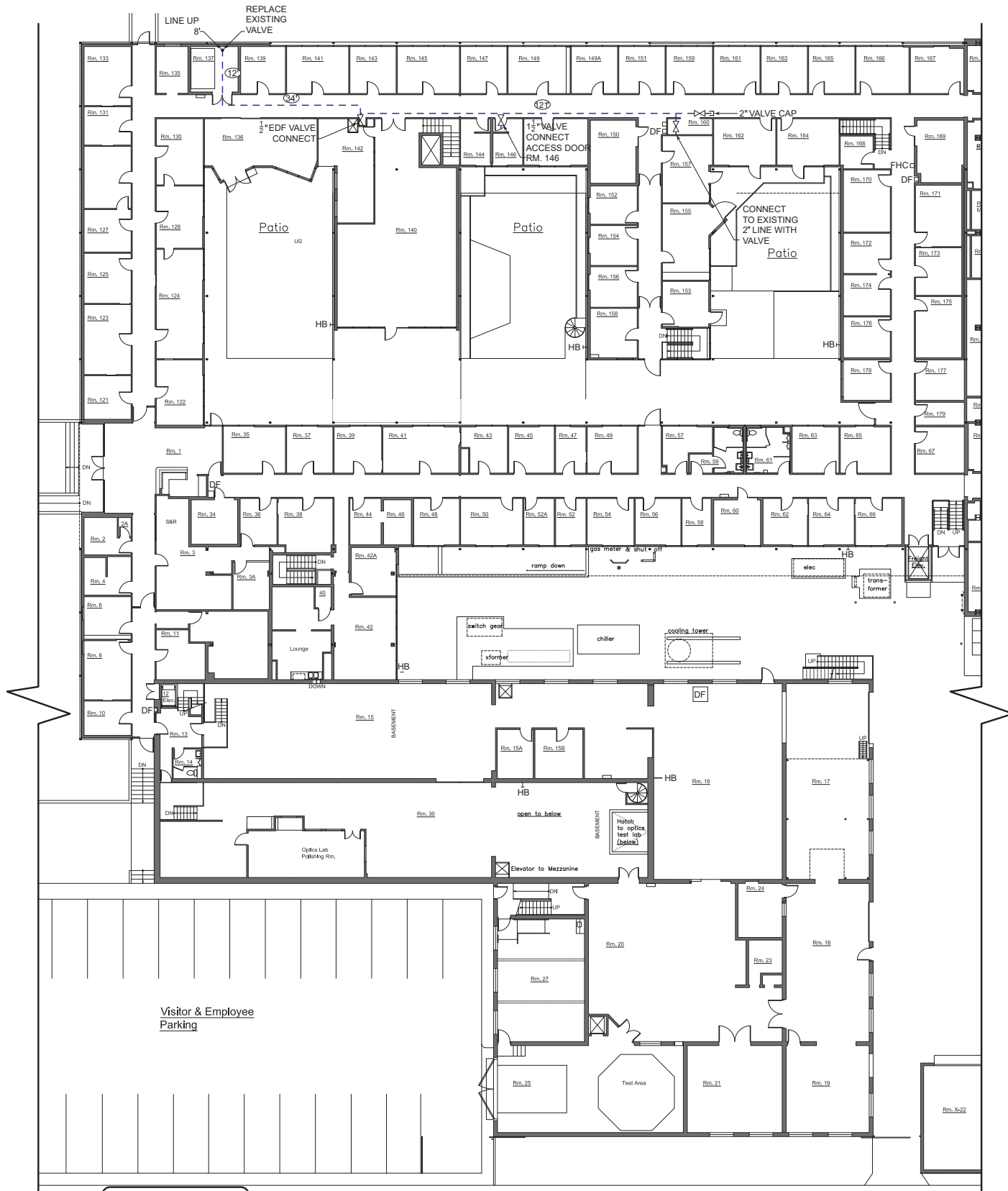
PHASE 2



National Optical-Infrared Astronomy Research Laboratory
950 N. Cherry Avenue
Tucson, AZ 85719
<https://noirlab.edu>

MAIN BUILDING - BASEMENT
NATIONAL OPTICAL-IR INFRARED ASTRONOMY RESEARCH LABORATORY
TUCSON, ARIZONA

DATE	02/15/22
DWN	R.D.D.
CHK	P.W.



LEGEND

- - - NEW LINES
- OLD LINES TO REMAIN
- ⊗ NEW VALVES TO INSTALL
- ⊔ PLUG OR CAP
- ⊗ EXISTING VALVE

PARTIAL FLOOR PLAN

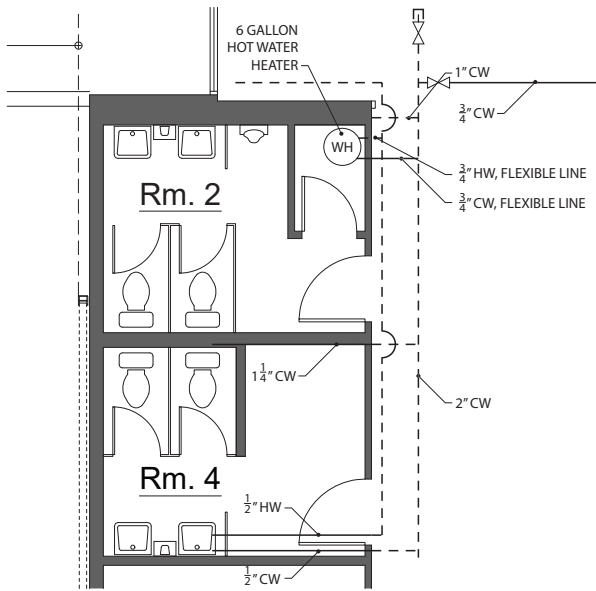
SCALE: 1/8" = 1'-0"



Hawthorne St.

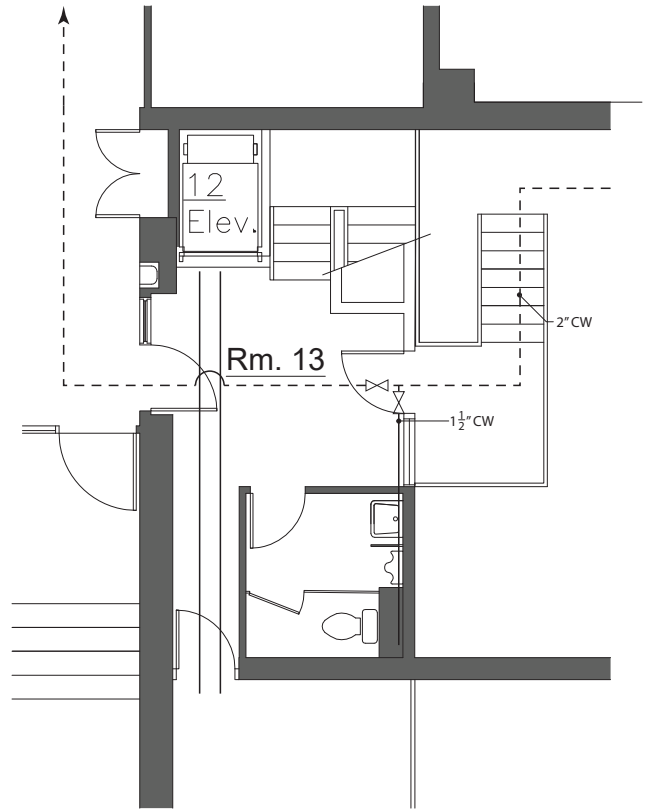
NOTE
ALL NOTED DISTANCES ARE FOR REFERENCE ONLY. CONTRACTOR TO CONDUCT OWN FIELD MEASUREMENTS FOR ACCURACY.

PHASE 3

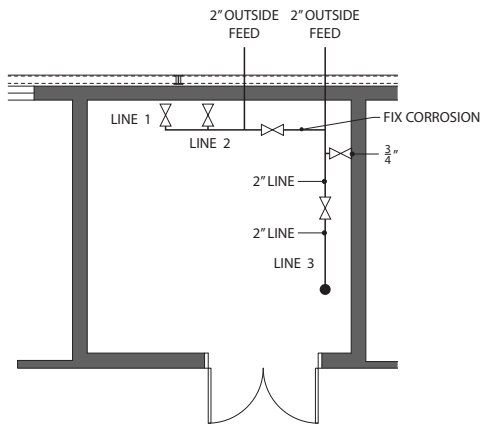


NOTE
 NEW LINES ARE IN THE WALLS.
 CONNECTIONS TO EXISTING LINES
 ARE IN THE CEILING.

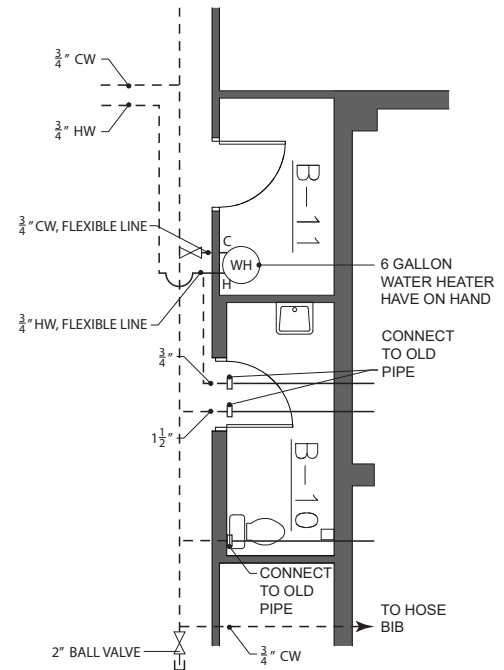
1 PARTIAL FLOOR PLAN - Rm. 2 & Rm. 4
 SCALE: 1/4" = 1'-0" NORTH



2 PARTIAL FLOOR PLAN - Rm. 13
 SCALE: 1/4" = 1'-0" NORTH



3 PARTIAL FLOOR PLAN - Rm. 137
 SCALE: 1/4" = 1'-0" NORTH



4 PARTIAL FLOOR PLAN - Rm. B-10 & Rm. B-11
 SCALE: 1/4" = 1'-0" NORTH



**National Optical-Infrared Astronomy
 Research Laboratory**
 950 N. Cherry Avenue
 Tucson, AZ 85719
<https://noirlab.edu>

MAIN BUILDING
 NATIONAL OPTICAL-INFRA-RED ASTRONOMY RESEARCH LABORATORY
 TUCSON, ARIZONA

DATE 02/15/22
 DWN R.D.D.
 CHK P.W.



LEGEND

- - - NEW LINES
- OLD LINES TO REMAIN
- ⊗ NEW VALVES TO INSTALL
- ⊕ PLUG OR CAP
- ⊗ EXISTING VALVE

NOTE
 ALL NOTED DISTANCES ARE FOR REFERENCE ONLY. CONTRACTOR TO CONDUCT OWN FIELD MEASUREMENTS FOR ACCURACY.

PARTIAL FLOOR PLAN
 SCALE: 1/8" = 1'-0" NORTH

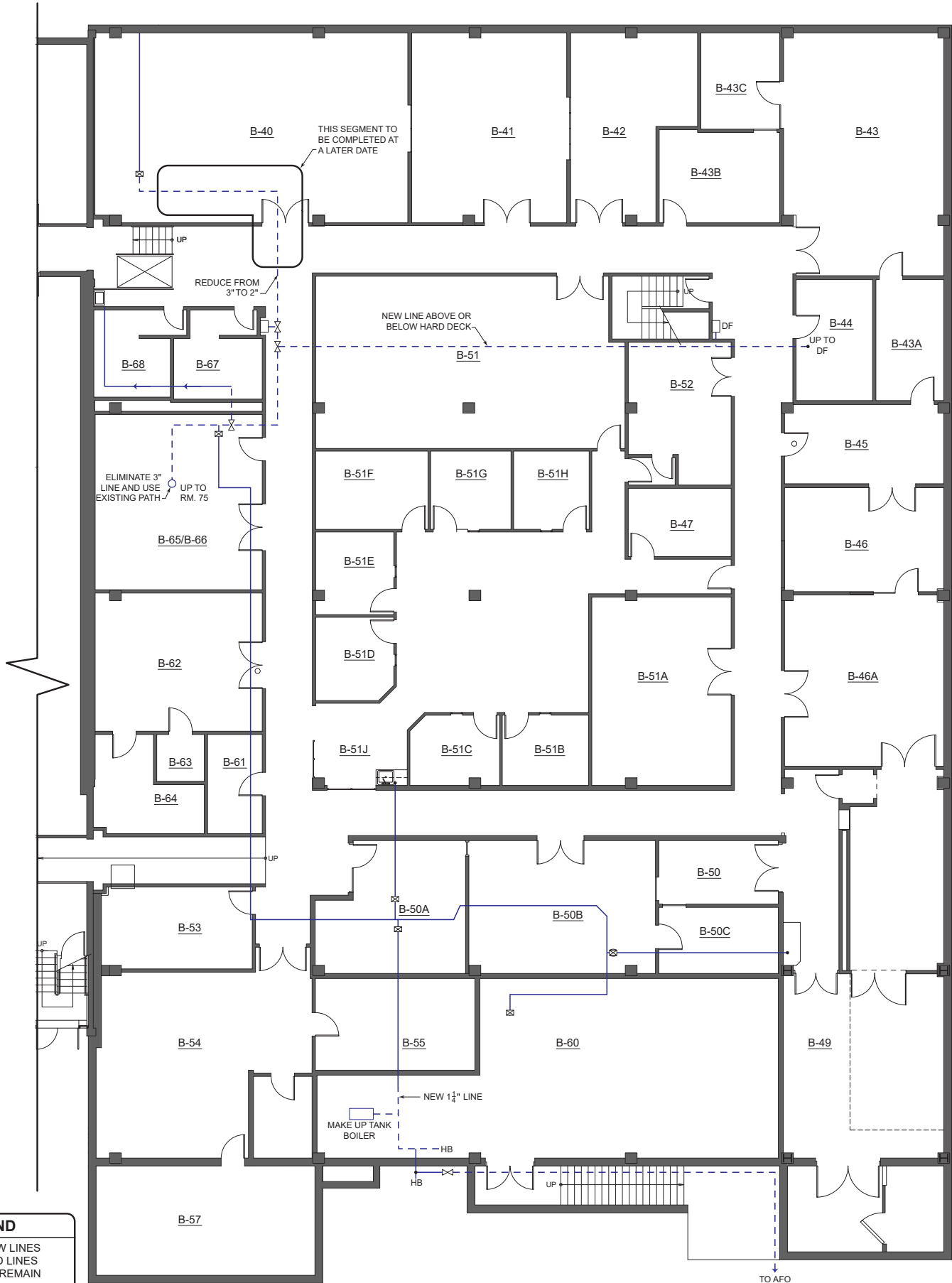
PHASE 4



National Optical-Infrared Astronomy Research Laboratory
 950 N. Cherry Avenue
 Tucson, AZ 85719
<https://noirlab.edu>

MAIN BUILDING
 NATIONAL OPTICAL-INFRA-RED ASTRONOMY RESEARCH LABORATORY
 TUCSON, ARIZONA

DATE	04/08/22
DWN	R.D.D.
CHK	P.W.

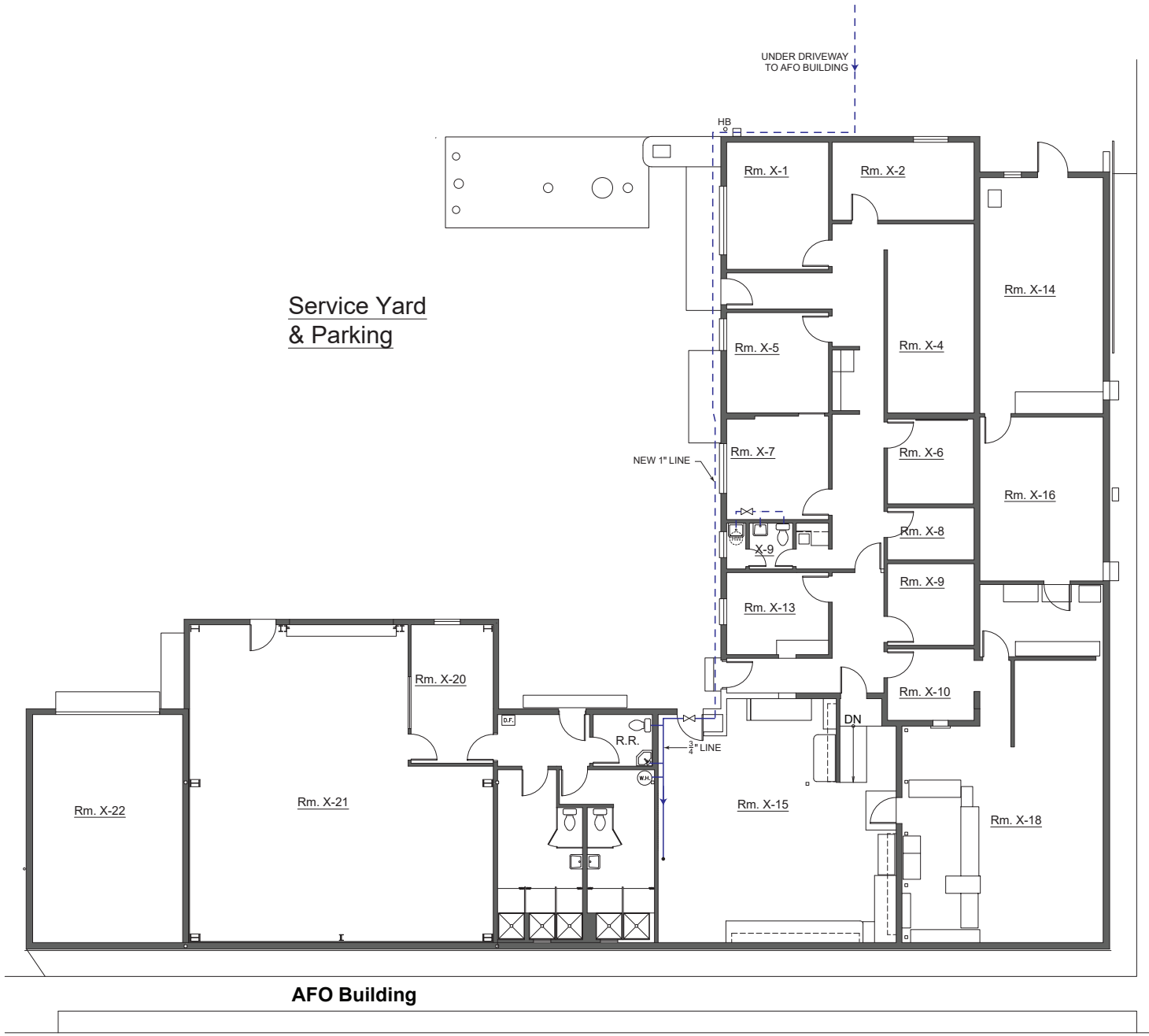


LEGEND

- NEW LINES
- OLD LINES TO REMAIN
- NEW VALVES TO INSTALL
- PLUG OR CAP
- EXISTING VALVE

PARTIAL FLOOR PLAN
 SCALE: 1/8" = 1'-0" NORTH

PHASE 4



LEGEND	
	NEW LINES
	OLD LINES TO REMAIN
	NEW VALVES TO INSTALL
	PLUG OR CAP
	EXISTING VALVE

PARTIAL FLOOR PLAN

SCALE: 1/8" = 1'-0"



PHASE 4



National Optical-Infrared Astronomy Research Laboratory
 950 N. Cherry Avenue
 Tucson, AZ 85719
<https://noirlab.edu>

AFO BUILDING
 NATIONAL OPTICAL-INFRA-RED ASTRONOMY RESEARCH LABORATORY
 TUCSON, ARIZONA

DATE	04/08/22
DWN	R.D.D.
CHK	P.W.