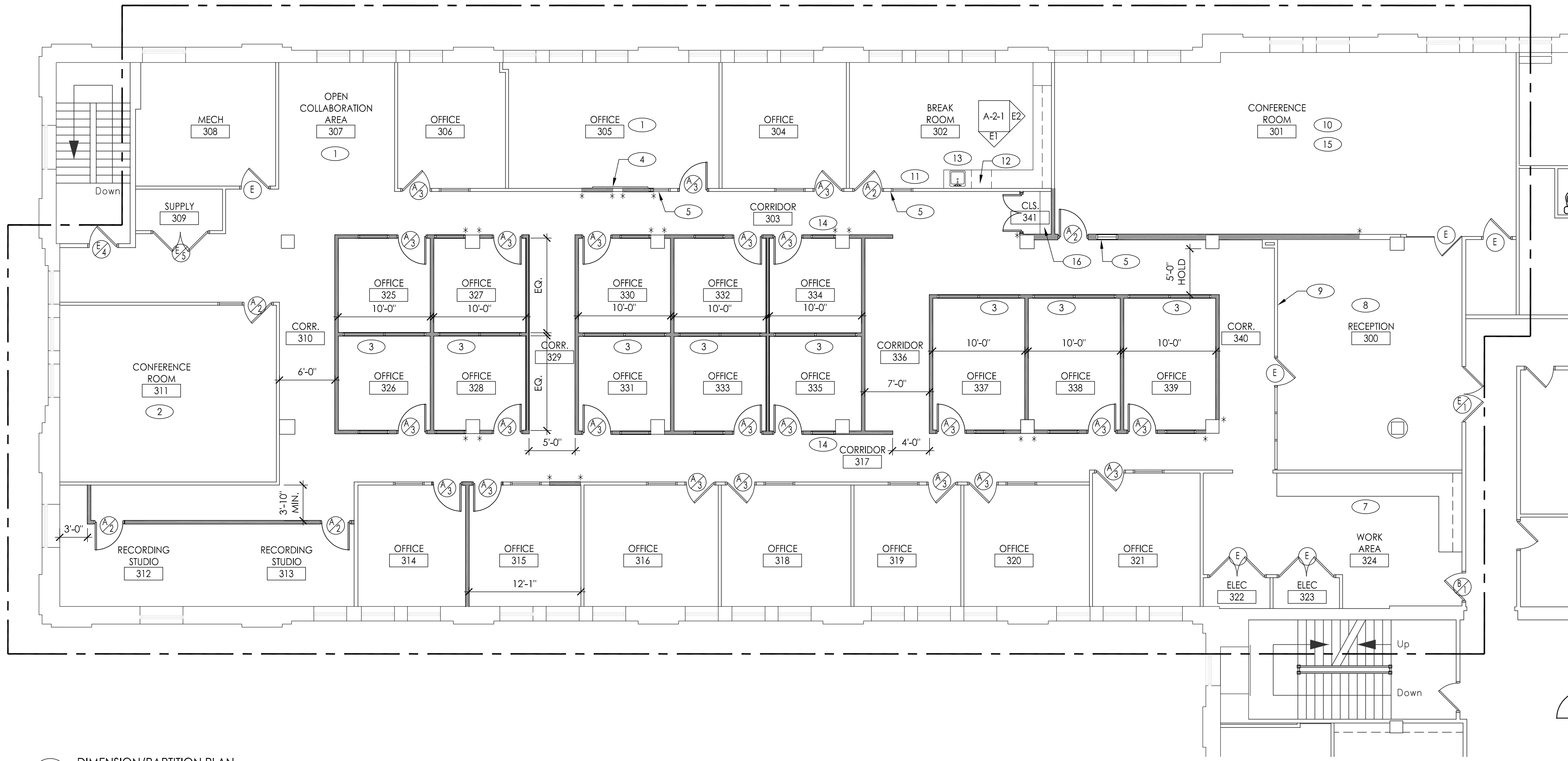


APPENDIX G: FLOORPLAN



A1 DIMENSION/PARTITION PLAN  
A-1-2 SCALE: 1/8" = 1'-0"

DIMENSION/PARTITION PLAN LEGEND	
ROOM NAME 10001	ROOM NUMBER
AXXX X	ELEVATION TAG: ELEVATION NUMBER SHEET NUMBER
---	EXISTING PARTITION TO BE MODIFIED TO ACHIEVE CONDITIONS OF NEW INTERIOR INSULATED PARTITION. CONTRACTOR TO REMOVE ONE (1) SIDE OF EXISTING DRYWALL, AS NECESSARY, TO INSTALL NEW SOUND BATT INSULATION, REPLACE DRYWALL AND PREPARE SURFACE TO RECEIVE NEW FINISHES.
---	NEW INTERIOR INSULATED PARTITION. SEE PARTITION SECTION, THIS SHEET.
○	DOOR & HARDWARE TYPE INDICATOR
*	ALIGN WITH EXISTING ARCHITECTURAL ELEMENT
---	AREA IN SCOPE

DIMENSION/PARTITION PLAN NOTES:

1. REKEY SUITE ENTRY FOR NEW TENANT.
2. ALL DOORS ARE PASSAGE FUNCTION UNLESS OTHERWISE NOTED OR SUITE ENTRY.
3. CONTRACTOR TO USE BUILDING STANDARD A.D.A. COMPLIANT HARDWARE.
4. CONTRACTOR TO INSTALL NEW WINDOW BLINDS AT ALL EXTERIOR WINDOWS. BLINDS TO BE PROVIDED BY LANDLORD.
5. ALL OFFICE DOORS TO RECEIVE ONE (1) 3'-0" W SIDE LIGHT, U.O.N. REFER TO DETAIL D1/A-2-1 FOR ADDITIONAL INFORMATION.
6. ALL DOORS RECEIVING AN OFFICE LOCKSET TO BE KEYPED SEPARATELY WITH ONE MASTER KEY. COORDINATE NUMBER OF MASTER KEYS TO BE PROVIDED TO TENANT WITH TENANT.

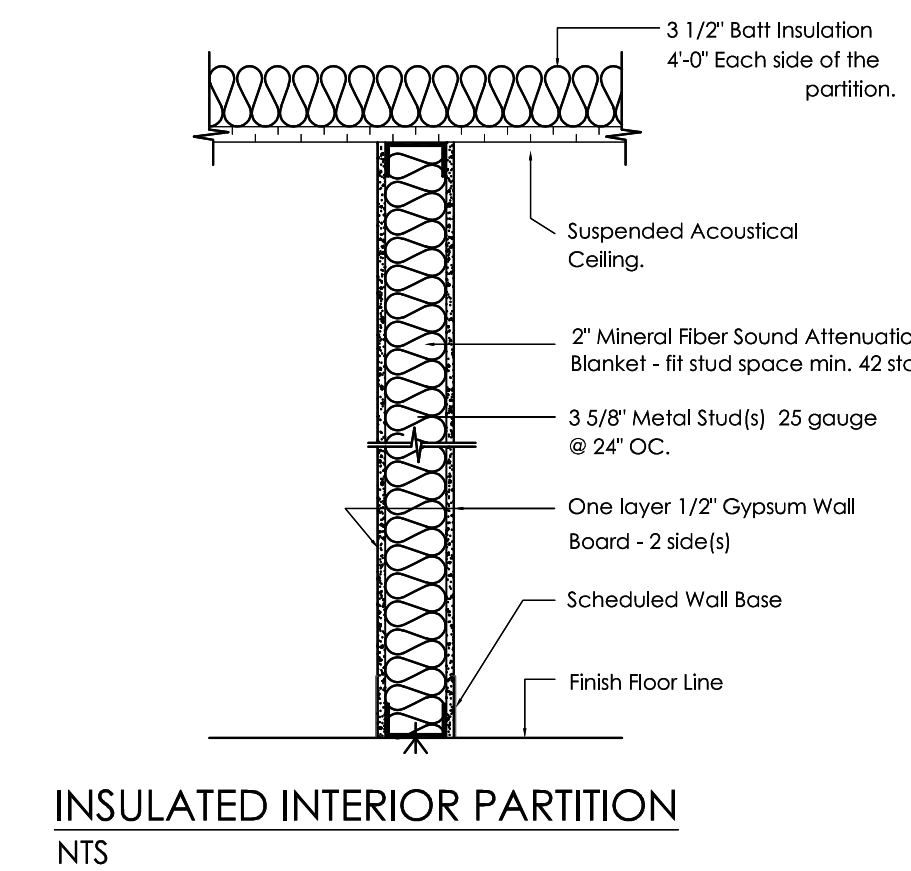
DIMENSION/PARTITION PLAN SPECIFIC NOTES:

1. PROVIDE AND INSTALL BLOCKING IN WALL FOR ONE (1) TENANT PROVIDED, CONTRACTOR INSTALLED WALL MOUNTED TV. EXACT HEIGHT AND LOCATION ARE TBD.
2. PROVIDE AND INSTALL BLOCKING IN WALL FOR TWO (2) TENANT PROVIDED, CONTRACTOR INSTALLED WALL MOUNTED TV'S. EXACT HEIGHT AND LOCATIONS ARE TBD.
3. NEW TRANSOM WINDOW AT THIS LOCATION. REFER TO DETAIL D2/A-2-1 FOR ADDITIONAL INFORMATION.
4. PROVIDE AND INSTALL BLOCKING IN WALL FOR ONE (1) TENANT PROVIDED, CONTRACTOR INSTALLED DIGITAL WHITE BOARD. EXACT HEIGHT AND LOCATION ARE TBD.
5. NEW 2'-0" W SIDE LIGHT AT THIS LOCATION. REFER TO DETAIL D1/A-2-1 FOR ADDITIONAL INFORMATION.
6. NOT USED.
7. MILLWORK AT THIS LOCATION IS E.T.R.
8. PROVIDE AND INSTALL BLOCKING IN WALL FOR FOUR (4) TENANT PROVIDED, CONTRACTOR INSTALLED WALL MOUNTED TV'S. EXACT HEIGHTS AND LOCATIONS ARE TBD.
9. PROVIDE AND INSTALL BLOCKING IN WALL FOR ONE (1) TENANT PROVIDED, CONTRACTOR INSTALLED WALL MOUNTED CLOCK. EXACT HEIGHT AND LOCATION ARE TBD.
10. PROVIDE AND INSTALL BLOCKING IN WALL FOR THREE (3) TENANT PROVIDED, CONTRACTOR INSTALLED WALL MOUNTED TV'S. EXACT HEIGHT AND LOCATIONS ARE TBD.
11. WATER LINE(S) FOR REFRIGERATOR WITH ICE MAKER AND WATER DISPENSER AT THIS LOCATION.
12. WATER LINE FOR DISHWASHER AT THIS LOCATION.
13. PROVIDE AND INSTALL GARBAGE DISPOSAL AT BREAK ROOM SINK.
14. NEW 2'-4" W SIDE LIGHT AT THIS LOCATION. REFER TO DETAIL D1/A-2-1 FOR ADDITIONAL INFORMATION.
15. TENANT PROVIDED AND INSTALLED AUTOMATIC ROLLER SHADES IN THIS ROOM. COORDINATE BLOCKING REQUIREMENTS WITH TENANT.
16. PROVIDE AND INSTALL SIX (6) 1'-3"D PAINT GRADE ADJUSTABLE HEIGHT SHELVES, BEGINNING AT 1'-3"A F.F. AT THIS LOCATION.

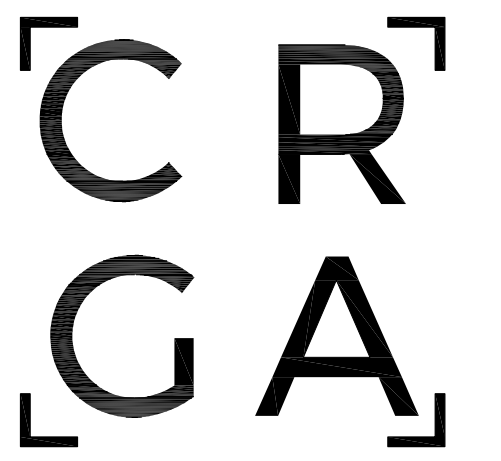
DOOR SCHEDULE									
DOOR NO.	MATERIAL			SPECIFICATIONS			FRAME		REMARKS
A	H	W/LF	TH.	TYPE	MATERIAL	FINISH	MATERIAL/TYPE	FINISH	NEW OR REUSED AND REFURBISHED
B	7'-0"	3'-0"	1-3/4"	INT.	SC WOOD	STAINED	METAL	PAINTED	NEW
E	7'-0"	3'-0"	1-3/4"	SUITE ENTRY	SC WOOD	STAINED	METAL	PAINTED	NEW
E	EXISTING TO REMAIN			EXISTING TO REMAIN			EXISTING TO REMAIN		

DOOR HARDWARE SCHEDULE			
SET NO.	HARDWARE DESCRIPTION		HEADER
1	KEY CARD HINGES SILENCERS FLOOR STOP	BLDG. STD. BLDG. STD. BLDG. STD.	SUITE ENTRY - NEW TO BE COORDINATED WITH TENANT'S VENDOR.
2	LATCHSET HINGES SILENCERS FLOOR STOP	BLDG. STD. BLDG. STD. BLDG. STD.	NEW SCHLAGE NO SERIES 'OMEGA' HEAVY DUTY CYLINDER SERIES ADA LEVER HARDWARE IN SATIN CHROME FINISH #626
3	OFFICE LOCKSET HINGES SILENCERS FLOOR STOP	BLDG. STD. BLDG. STD. BLDG. STD.	NEW SCHLAGE NO SERIES 'OMEGA' HEAVY DUTY CYLINDER SERIES ADA LEVER HARDWARE IN SATIN CHROME FINISH #626
4	KEY CARD HINGES SILENCERS WALL STOP PUSH BAR EXIT DEVICE	BLDG. STD. BLDG. STD. BLDG. STD. BLDG. STD.	EXISTING DOOR HARDWARE TO REMAIN. PROVIDE NEW KEY CARD ACCESS FROM STAIRWELL INTO TENANT SUITE. ALLOW FOR FREE EMERGENCY EGRESS AT ALL TIMES. COORDINATE WITH TENANT'S VENDOR.
5	STORAGE LOCKSET HINGES SILENCERS FLOOR STOP	BLDG. STD. BLDG. STD. BLDG. STD.	NEW SCHLAGE NO SERIES 'OMEGA' HEAVY DUTY CYLINDER SERIES ADA LEVER HARDWARE IN SATIN CHROME FINISH #626

BREAK ROOM APPLIANCE SCHEDULE	
APPLIANCE DESCRIPTION	PRODUCT
REFRIGERATOR WITH FRENCH DOOR, FREEZER BELOW, ICE MAKER & WATER DISPENSER	GE PROFILE 22.1 CU FT FRENCH DOOR COUNTER-DEPTH REFRIGERATOR WITH HANDS-FREE AUTOFILL; MODEL #PYE22KYNFS, O.E. COLOR: STAINLESS STEEL NOTE: ALTERNATE PRODUCT TO BE APPROVED BY TENANT PRIOR TO ORDERING.
DISHWASHER, ADA COMPLIANT	SAMSUNG FRONT CONTROL, BUILT-IN DISHWASHER WITH STAINLESS STEEL TUB, INTEGRATED DIGITAL TOUCH CONTROLS, S2 DBA; MODEL #DW60R2Q14US, O.E. COLOR: STAINLESS STEEL NOTE: ALTERNATE PRODUCT TO BE APPROVED BY TENANT PRIOR TO ORDERING.
MICROWAVE	GE 2-CU FT 1200-WATT SENSOR COOKING-COUNTERTOP MICROWAVE; MODEL #JES2051SNSS, O.E. COLOR: STAINLESS STEEL NOTE: ALTERNATE PRODUCT TO BE APPROVED BY TENANT PRIOR TO ORDERING.



INSULATED INTERIOR PARTITION



**CRGA DESIGN**  
37 W. Cross Street, Suite 300  
Baltimore, Maryland 21230  
o : 410.841.2570  
www.crgadesign.com

SEAL

I CERTIFY THAT THESE DOCUMENTS WERE PREPARED OR APPROVED BY ME, AND I AM A DULY LICENSED ARCHITECT UNDER THE LAWS OF THE STATE OF MARYLAND, LICENSE NUMBER 95038. EXPIRATION DATE 01-1-2025. STATE OF MARYLAND LICENSE NUMBER: 14695

82024 CR GOODMAN ASSOCIATES, LLC D.B.A. CRGA DESIGN. THESE DRAWINGS ARE THE PROPERTY OF THE ARCHITECT, CR GOODMAN ASSOCIATES, LLC D.B.A. CRGA DESIGN. UNAUTHORIZED REPRODUCTION FOR ANY PURPOSE IS AN INFRINGEMENT UPON COPYRIGHT LAWS. VIOLATORS WILL BE SUBJECT TO PROSECUTION TO THE FULLEST EXTENT OF THE LAW.

CONSULTANTS  
CONSULTANT 1 - MEP  
JLR DESIGN CONSULTANTS, INC.  
1901 N. FOUNTAIN GREEN ROAD  
BEL AIR, MD 21015  
P: (410) 893-2822  
F: (410) 803-0442

ISSUE	DATE	NUMBER
FOR REVIEW	10-16-2023	01
FOR REVIEW	12-18-2023	02
FOR PERMIT	01-03-2024	03

ISSUED FOR PERMIT & BID

CLIENT  
**MCB**  
MULTI-CULTURAL BUILDERS

PROJECT TITLE  
**AURA, SUITE 350**

DATE 01-03-24  
CRGA PROJECT NUMBER 22.036.A

DRAWING TITLE  
**DIMENSION /PARTITION PLAN**

DRAWING NUMBER  
**A-1-2**